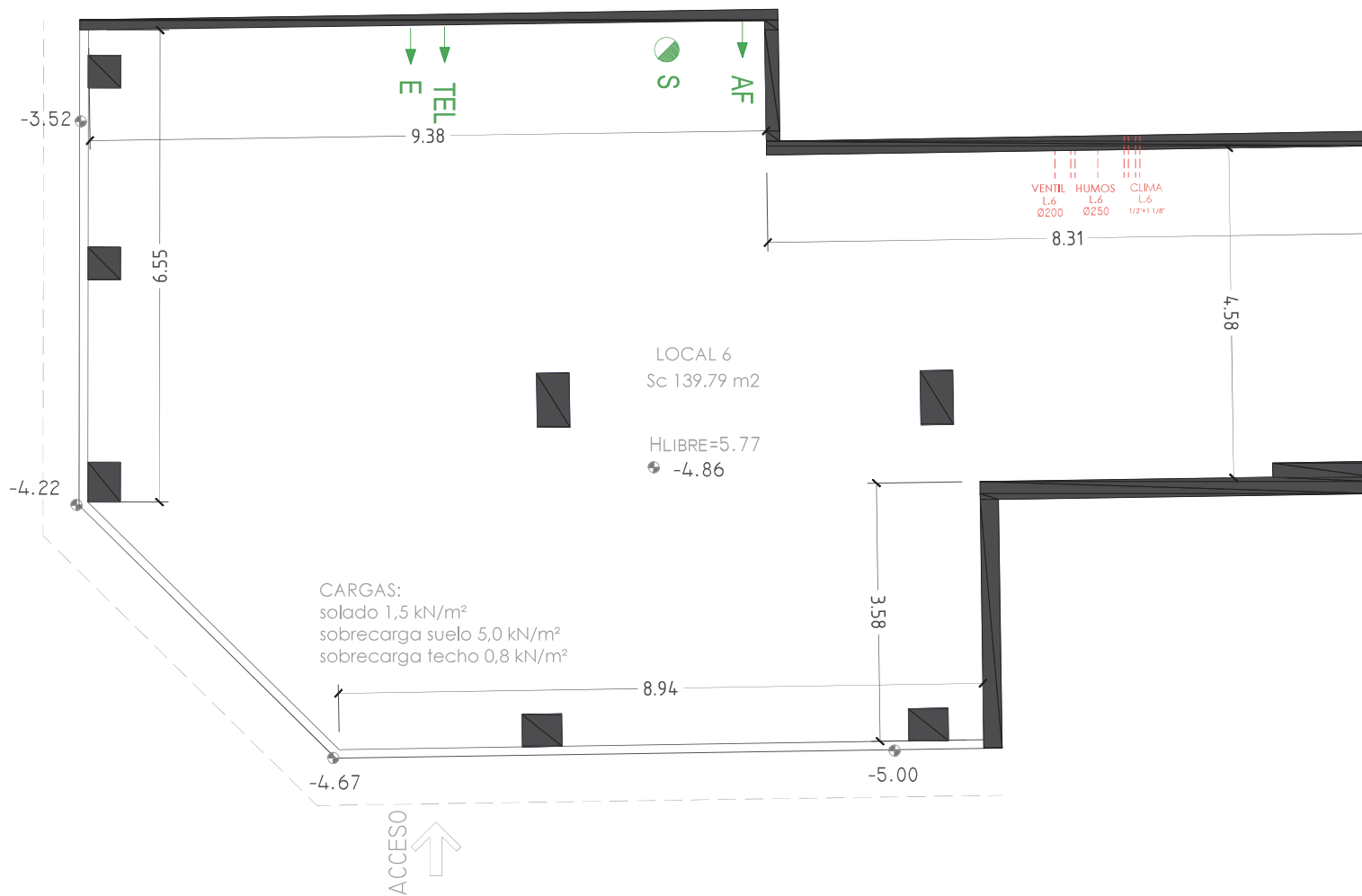
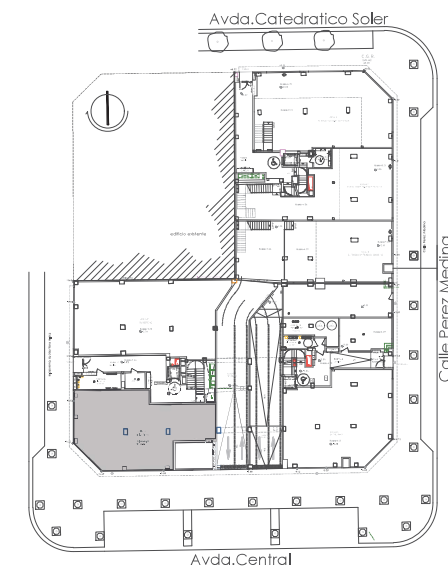




LOCALES COMERCIALES

LOCAL 6

SUPERFICIE CONSTRUIDA 139,79










CARGAS:
solado 1,5 kN/m²
sobrecarga suelo 5,0 kN/m²
sobrecarga techo 0,8 kN/m²

LOCAL 6
Sc 139.79 m²

HLIBRE=5.77
+ -4.86

VENTILACIÓN

-  TUBO Ø250 HUMOS
-  TUBO VENTILACIÓN
-  2 TUBOS DE COBRE CALORIFUGADOS DE 1/2" + 1 1/8"

-  S PREVISIÓN SANEAMIENTO
-  AF ACOMETIDA AGUA FRÍA
-  TEL ACOMETIDA TELECOMUNICACIONES
-  E ACOMETIDA ELECTRICIDAD

